

Bauer RTG RG16T Telescopic Leader Rig

Vibratory installation at Fussey Piling is completed using our fleet of Bauer RTG 16T Telescopic Leader Rigs. Sheet piles can be pitched and driven to level in one smooth operation with all operatives working at ground level. The piles are gripped in failsafe hydraulic jaws and vibrated to level using a variable moment high frequency vibrator and the crowd force of the machine.

The telescopic leader fully extends to facilitate the installation of piles up to 16.0m in length, driven with a MR 150AVM Vibro-driver. This resonance-free variable moment vibrator has a maximum centrifugal force of 150 tonnes and are amongst the largest leader rig mounted vibrators in the country.

Power for this latest generation of leader rig comes from a Caterpillar C18 Tier 4 final engine, boasting a massive 563kW of raw power to drive the vibrated piles into all but the hardest ground conditions.

To assist with the installation of piles into very dense gravels and very stiff clays an auger motor can be fitted to the mast to pre-drill the substrata and loosen the soils (using a 400mm dia. auger at 600mm clutch centres for 'U' piles).

The base unit has retractable tracks resulting in a travelling width of only 3.0m and an overall weight of approximately 55 tonnes. Once on site, the mast is quickly erected and the tracks are extended to give a stable working width of 4.2m. However, it is necessary to work close to the pile line and on almost the same level as the pile cut off.



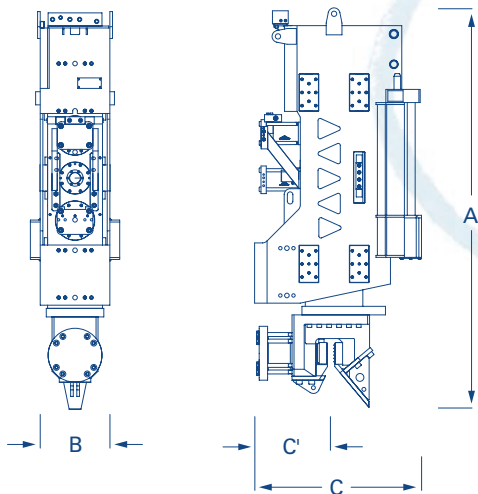
ADVANTAGES

- Quiet in operation
- Low in ground borne vibrations
- Pre-augering can permit lighter piles to be used keeping costs down
- Leader trench of only 500mm required
- Safer, no working at height required
- Less chance of piles swinging or falling onto adjacent property.

TYPICAL BEARING PRESSURES	RTG16T		
	Handling	Augering	
Max rectangular bearing pressure	193	327	kN/m ²
Equivalent track bearing length	3.08	2.33	m

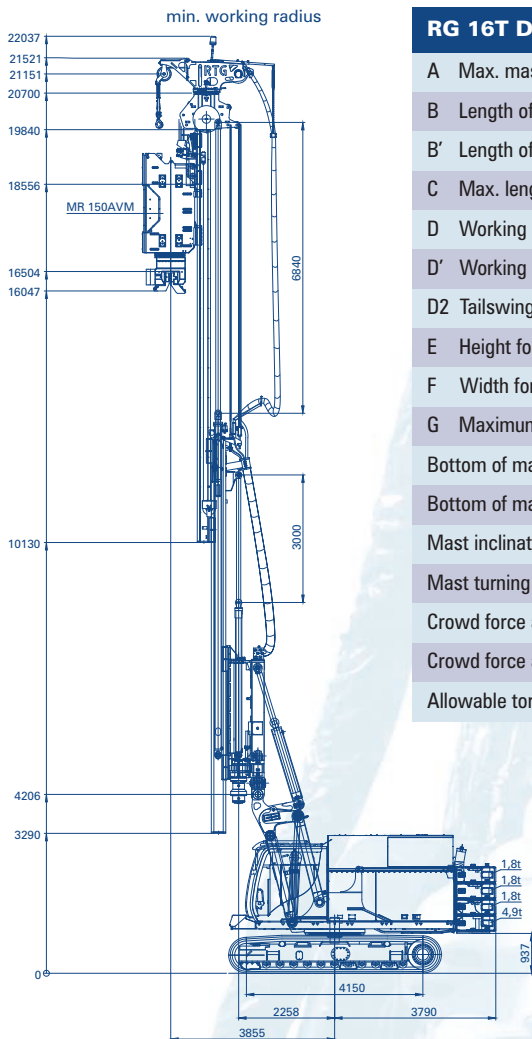
Typical noise level at 15m – 75dBA
(Pneumatic Hammer – 105dBA)

Bauer RTG RG16T Telescopic Leader Rig



MR150 AVM

A Overall height	3200 mm
B Width	530 mm
C Depth	1400 mm
C' Depth	700 mm
Max. centrifugal force	1500 kN
Speed	2500 rpm
Hydr. rating on vibrator	480 kW
Clamping force (standard clamp)	1800 kN
Total weight (with clamp)	5000 kg



RG 16T DATA

A Max. mast height (leader extended, min. work radius)	20690 mm
B Length of mast (leader extended)	17400 mm
B' Length of mast (leader retracted)	10600 mm
C Max. length of piles (with vibrator, min. work radius)	1600 mm
D Working radius (minimum)	3850 mm
D' Working radius (maximum)	5440 mm
D2 Tailswing area	3790 mm
E Height for transport	3250 mm
F Width for transport	3000 mm
G Maximum working width	4200 mm
Bottom of mast (max. position above ground)	3300 mm
Bottom of mast (min. position below ground)	1750 mm
Mast inclination (forward/backward/sideways)	4°/10°/4°
Mast turning angle (right/left)	100°/100°
Crowd force at sledge of vibrator (push)	140 kN
Crowd force at sledge of vibrator (pull)	200 kN
Allowable torque	80 kNm