

# newsupdate

## Welcome to the 20th Year of Fussey Piling Ltd

Since humble beginnings in 1996 Fussey Piling (or F E Piling as it was then) has evolved to be one of the best equipped and successful sheet piling companies in the UK.

With a simple philosophy of doing the best possible job in the safest and most efficient manner we have grown and invested continually since our inception.

We are proud of our relationships with both suppliers and customers which ensures on-going repeat business and opportunities.

The last year has been our busiest yet , we have installed substantial quantities of sheet piles at Tottenham Hotspur Football Stadium, the former Slough Bus Station, Battersea and various other sites in the UK to name but a few.

Please take a few moments to grab a mug of tea and pull up a comfy chair to read our latest newsletter!

**Best Wishes, Des Fussey, Chairman.**



## Fussey Piling in-house design expertise

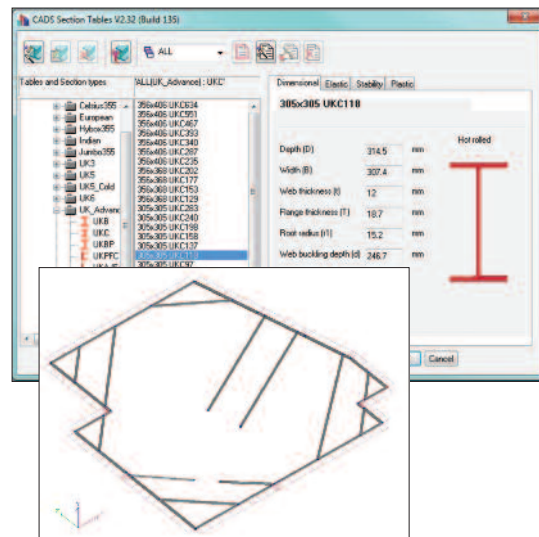
We now offer in-house framing design for cofferdams and propped retaining walls. Previously, we subcontracted out framing designs which meant we could not always offer the best and most efficient design service for a retaining wall package.

However, in keeping with our desire to be self-sufficient our Design Team are now using the latest Steel Framing Design software by CADS.



CADS Steelwork Member Designer is a program which prepares calculations for the strength, stability and stiffness of steel members to the requirements of EC3 and BS 5950 Part 1 2000.

Miles Fenton, Design Engineer states "Value engineered designs can be produced at tender stage to ensure we offer the most economic price for your project".



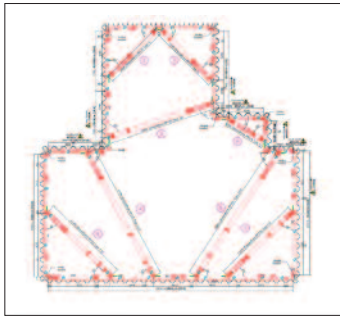
# recent projects

## BBC TVC

As part of the £8billion redevelopment of the BBC Television Centre we were engaged by P J Carey to install a temporary cofferdam.

Our works, sited right outside the front of the iconic building, allowed safe excavation of a new flood alleviation tank. Due to

the dense nature of the soils the ground had to be pre-augered in advance of installation. In total we drove 220 No. 6-8m long sheet piles with our Silent and Vibration-free press. Once partially excavated the sides of the cofferdam were propped with a hydraulic frame to limit pile head deflections, and provide a more economic retaining wall solution.



## Rowhedge Wharf

In the warm summer sun we installed a new river wall for phase one of the new Rowhedge Wharf housing development. The existing wall was failing and completely rusting through in places. Due to the environmental sensitivity of the site all the work had to be completed inside the existing wall. We were contracted by Tamdown to supply and drive over 300 No. 12m piles, and 60 No. 9m piles in less than 3 weeks.



## Repeat, Repeat, Repeat

In the last year we have completed a trio of projects for Metnor Construction. Repeat business such as this highlights our commitment to working closely together with key clients to give best value for each project. The largest of the hat-trick was a new student accommodation scheme in Kingston upon Thames.

On this particular project, due to the tight time scales, two of our Silent and Vibration-free Kowan WP-150 Stillworker Presses were utilised.

The piles were driven to level before partial excavation could be carried out and a fully welded temporary waling scheme installed.



The Sheet piles were all designed in-house and the framing was supplied and installed by our sister company Fussey Engineering.



## Old Quarry, New Project

One of our more interesting projects commenced this year was in Erith for Anderson Construction.

The site is a former quarry used to provide ballast for ships and during the industrial revolution it provided high quality loam used for agriculture and construction.



The site in 1890

After World War II it was used as a landfill location and back filled with concrete, bricks and building rubble most of which came from the buildings destroyed in the war. Since that time the site had become unused and overgrown.

A new development was proposed to revitalise the area. The new development includes the construction of a 3-form entry Primary School, up to 700 homes, ecological walkways, a grassland area and the creation of new pedestrian links through the site.



We have installed almost 1000 sheets on the site so far. The piles have been used as the temporary sheet piling for the school building and a permanent piled wall with tie rods and anchors to form the basis of a new access road. There was concern that obstructions might be an issue, but using the power of the Bauer RTG 16T leader rig, all piles have been successfully driven to level.



## employee news

Top Piling Operative and Welder, Lewis Fisher won the prestigious 'Employee of the Month Award', whilst working on the new stadium project for THFC in north London. A certificate and voucher was awarded by MACE, in recognition of Lewis' helpful attitude and for consistently working safely whilst on site.



As the demands of our clients increase we have taken on another administrator to ensure the paperwork is fully prepared and actioned as required. We are pleased to announce Tracey Learoyd joined us at the beginning of the year.



We are pleased to welcome Keiron Boyes to the site team. Keiron joins us as a general piling operative working under the wing of supervisor Charlie Scott.



We were also delighted to hear the fantastic news that our Administrator, Jenny Fenton, gave birth to a beautiful baby girl in the spring of this year. We welcome Vivienne to the world and look forward to seeing her on site very soon!

# investment in new plant pays dividends

We are pleased to announce the arrival of a brand new state of the art Kowan WP-150 Stillworker to our extensive plant fleet.

This is the sixth Stillworker we have purchased since 2000.

This latest generation of the machine has the following improvements over the older models;

- Euro Stage 4 engine
- Mast protection - Mast press-in force control system
- STSS - Self-Travel Support System (new exclusive Safety feature)
- New Kowan data logger management system (remote tablet option)

In short, we are now able to self-travel with this machine driving and extracting sheet piles in a more efficient and safe manner.

Working with our fleet of telescopic crawler cranes we can mobilise and start installing sheet pile in just a few short hours.



## what is the Fussey Piling unique selling point? did you know?

- ✓ We only have fully qualified and directly employed labour on our sites.
- ✓ We own all our own construction plant, including Cranes, Leader Rigs, Silent Pile Presses and welding sets.
- ✓ We employ dedicated plant fitters to limit non-productive time and keep our machines in A1 condition.
- ✓ All sheet pile design is completed in-house by our own Design Team.
- ✓ We hold over 1000 tonnes of piles in stock for immediate starts. Note: We only use ArcelorMittal steel produced to EN 10248 Part 1 for quality, environmental impact and service.
- ✓ Temporary framing and welding is completed by our sister company Fussey Engineering.
- ✓ All quotations are fully designed, specified, and qualified to meet your needs.



If you are looking for sheet piling and are involved in the early stages of a project please get in touch to see how we can assist you.



Fussey Piling Ltd, Unit 2, Threshers Yard, West Street, Kingham, Oxfordshire OX7 6YF

Tel 01608 659595

Email [mail@fusseypiling.com](mailto:mail@fusseypiling.com)