

NEWSUPDATE

Hello, and welcome to our 2019 Newsletter

This last year has been busy for all of us at Fussey Piling Ltd. We have invested in new equipment & training for everyone who works for us both on-site and in our offices. We have taken on some new staff, and have seen some families grow with two new babies born to our amazing staff. We have undertaken over 60 different sheet piling projects all over the UK with values ranging from £25,000 to £1 million.

We are pleased to invite you to take a few minutes to read through what we have been up to. If you are looking for advice or pricing on sheet piling please contact me at the Kingham office.

Graham

Graham Hall, MD

Recent Projects



As stated in the introduction we were successfully awarded 60+ projects over the last year. We have been working all over the UK on a wide variety of sites ranging from Highways to Prestigious National Developments and Small Housing Schemes. Our statistics show 70% of our work is from repeat business customers, whilst the remaining 30% of orders came from recommendations and new clients. Here's a couple of examples of projects recently completed.

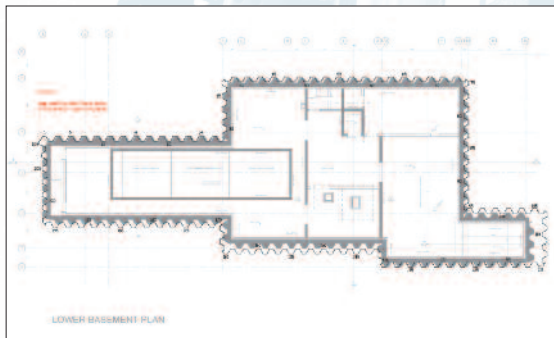
Fife Road, Richmond

This scheme is for a private individual who was looking to build his dream property for his family. We were invited early on in the design development stage to produce the most cost-effective steel intensive basement on the site. It was deemed steel was a better alternative to concrete for reasons of speed of construction and economics. Our element was to design, supply and install a basement cofferdam of sufficient size to encapsulate a car lift pit, underground parking, gym, and swimming pool.



Due to the dense nature of the soils the ground was initially pre-augered with one of our Bauer RTG 16T leader rigs to full pile depth. The 400mm nominal diameter auger loosens the soil without

removing it to enable pile installation. The piles were successfully driven with our Kowan WP-150 Stillworker supported with our Sennebogen 643 Telescopic crawler crane. Due to the relative compact nature of the plant we were able to shorten the site programme by undertaking two operations at once.



High Wycombe

We were engaged by our customer on this project to install a 180m run of 8.0m Z piles to form a temporary, left in, retaining wall directly in front of an existing concrete retaining wall. The new warehousing development required the back of the site to be lowered by approximately 2.5m to produce a more gently sloping industrial zone than the existing steeply sloping site.

The piles, produced by Arcelor Mittal, were supplied in loose pairs to enable the sheets to be driven together or in singles depending upon the varying ground conditions across the site. We employed the use of our powerful Bauer RTG 16T Leader Rig to drive most of the piles in pairs to finished level. With an anticipated programme of 2 weeks we managed to complete the piling in just 7 days. This was due to the

way the client expertly prepared the site in advance, and the very hard work from our piling team on the project.



Egham

They say what goes up must come down. In sheet piling, sometimes what goes in must come out! One of the fantastic things about sheet piling as a flexible retaining wall system is that piles can easily be recovered once the structure has been built and the area back-filled.

On this 5-star hotel project a large 60m x 150m by 5.0m deep cofferdam was required to enable the construction of a new basement substructure. The 10.5m 'U' piles were initially driven with a combination of Leader Rig and a Silent and Vibration-free Press. Upon completion of the substructure the piles were available to be extracted.

For reasons of access the piles were all extracted with our Kowan Stillworkers. In our opinion this is a far safer method than the more traditional crane suspended methods as all work is executed at ground level. Other than handling the Stillworker, you do not need a large crane with large lifting capabilities as the crane only lifts and stacks the individual sheets. On some very restricted sites we have used a tower crane to enable even more piles to be extracted.

Once the piles are removed they are returned to our yard for cleaning and trimming to be used against on another project. In sheet piling, recycling has been part of our operation for decades.



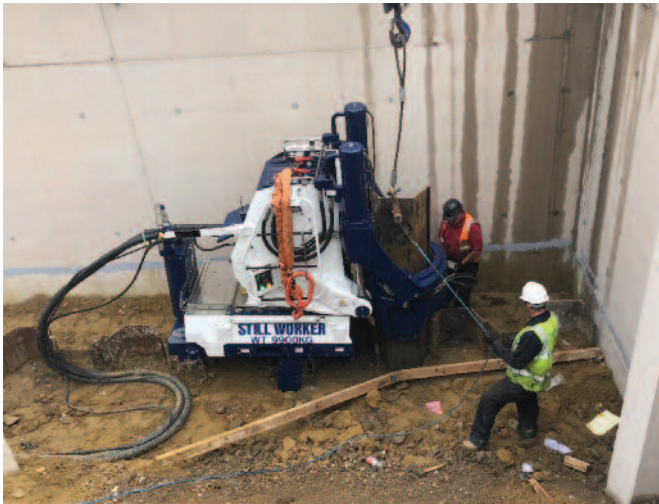
New Plant

We are delighted to announce the purchase of our latest piece of innovative pile driving technology. The brand new Kowan WP-150 Stillworker has been supplied through European Agents, Watson & Hillhouse of Ipswich.

This is the third generation of this technology, and the 8th rig we have brought, and offers many new improvements in outputs and operation

over the older unit it has replaced. Apart from the latest Tier 4F engine, it also boasts the following features;

- Exclusive Mast Tilting Device is standard with each machine.
- Virtually noise and vibration free means installation of steel piles as close as 500mm to existing structures or services
- Operates at ground level with no piling gates making it a very safe method of operation
- Uses a wireless radio control providing a broad range of vision for the operator and a safe working environment
- It is light and compact requiring only a small crane for pile pitching



Training our People

As part of commitment to lifelong learning and self-improvement we have seen everyone undertake some form of training in the last year.

Some very informative and interesting training was facilitated by Van Elle. The Achieving Behavioural Change Course was attended by everyone at Fussey Piling who works on site and in our yard and included our Operations Manager, Ben Jones and even our MD, Graham Hall. If you have not engaged your personnel into attending a similar course we would highly recommend it.

We recognise the importance of working safely on site; not just saying what we are doing, actually demonstrating it too. In the last 12 months we have supported the following training;

- 15 Slinger Signaller Courses
- 2 Crawler Crane Courses
- 21 Site Safety Plus – Achieving Behavioural Change
- 1 Emergency first aid at work
- 1 Appointed Person Lifting Operations
- 1 Construction Project Management
- 1 Site Supervisor Safety Training Scheme
- 2 Crane Supervisors Courses
- 3 NVQs in various construction related trades.

At the same time, we also recognise the wisdom in the industry. Our Estimating Director David Jones has turned 70 this year and shows no signs of slowing down! He still plays squash at least twice a week and spends a couple of hours at the gym at the weekend. We send David the very best wishes as he enters his 71st year.



Institute of Civil Engineers

“Reasonable Care” at a Mock Trial



Our two Design Engineers accompanied by our Operations Manager and MD recently attended an insightful Mock-Trial hosted by the Institution of Civil Engineers at their global headquarters at One Great George Street, London.

The Mock Trial was based upon a real case where the defendant allegedly failed to comply with the duty to take "reasonable care" for his own health and safety and the health and safety of those who may be affected by his acts or omissions at work. We sat as 'jurors' in a prosecution under Section 7 Health and Safety at Work Act 1974.



The trial went on to focus on issues relating to compliance with company procedures, safe working practices and the influence of fellow workers upon one's own actions.

We found the case very informative and helped us all understand the duty upon

ALL employees to take "reasonable care" for their own health and safety at work AND the duty to take "reasonable care" for the health and safety of those who may be affected by their acts or omissions at work.

New Staff



We are pleased to welcome the following new personnel over the last 12 months.

Steve Rock joins us based in our Killingholme yard, undertaking general duties.

Craig Wakeham started recently as a Piling Operative working with our Stillworkers.

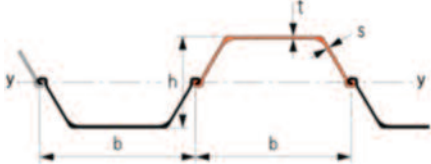
Crayge Revell has taken up a position

as a Piling Operative working with silent and vibration-free piling rigs.

We are also pleased to announce our Design Engineer; Miles Fenton's family has grown with the arrival of a handsome baby boy. At the same time one of our Trainee Supervisor's, Ben Simpson has also welcomed a bouncing baby boy to his family too. We wish both family's well with their additions.

Sheet Piles

We hold large stocks of 'U' Arcelor Mittal sheet piles, which facilitates short lead-in times to meet your programme requirements.



Section	Width	Depth	Flange Thickness	Webb Thickness	Mass / m	Mass / m ²	Moment of Inertia	Section Modulus
	b	h	t	s				
	mm	mm	mm	mm	kg/m	kg/m ²	cm ⁴ /m	cm ³ /m
GU 8N	600	312	7,5	7,1	48,5	80,9	12 010	770
GU 13N	600	418	9,0	7,4	59,9	99,8	26 590	1 270
GU 14N	600	420	10,0	8,0	64,3	107,1	29 410	1 400
GU 16N	600	430	10,2	8,4	72,6	121,0	35 950	1 670
GU 21N	600	450	11,1	9,0	81,9	136,5	46 380	2 060
GU 22N	600	450	12,1	9,5	86,1	143,6	49 460	2 200
GU 23N	600	450	13,1	10,0	90,4	150,7	52 510	2 335
GU 27N	600	452	14,2	9,7	97,4	162,3	60 580	2 680
GU 32N	600	452	19,5	11,0	114,1	190,2	72 320	3 200



Fussey Piling Ltd, Unit 2, Threshers Yard, West Street, Kingham, Oxfordshire OX7 6YF

Tel 01608 659595

Email mail@fusseypiling.com