

## Bauer RTG 16T Leader Rig Basic Method Statement

This has been produced by Fussey Piling to give a basic guide to installing sheet piles with a telescopic leader rig. It is for information only.

### Unloading and Mobilisation

The leader rig is delivered on a Low Loader.

The rest of the equipment is delivered on an articulated lorry.

The piles and equipment are unloaded with a 5tonne capacity winch fitted to the mast of the rig.

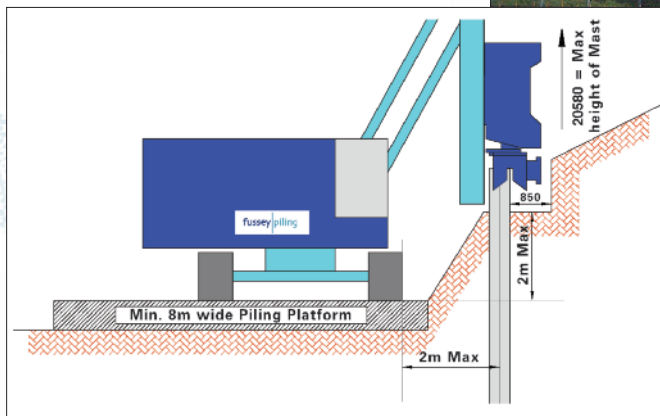
No lift will be greater than 5t.

Access ramps are to be a gradient not steeper than 1 in 10.

The rig shall work from a level, designed Working Platform – min 8m wide. The piling rig can work up to 2000mm above or 500mm below piling platform level.

### Setting Out

Setting out and levels are to be provided by the main contractor on the centreline of the sheet piles and at each change of direction and 10m intervals.



Max Rectangular Bearing Pressure = 430 kN/m<sup>2</sup>

Equivalent track bearing length = 2.33m

Track width = 0.7m

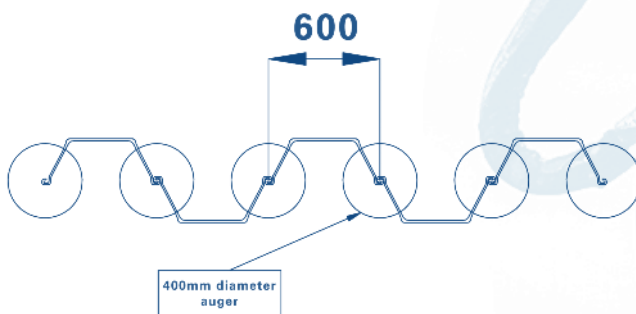
(Load Case 2 Extracting with Auger )

## Pre-Augering

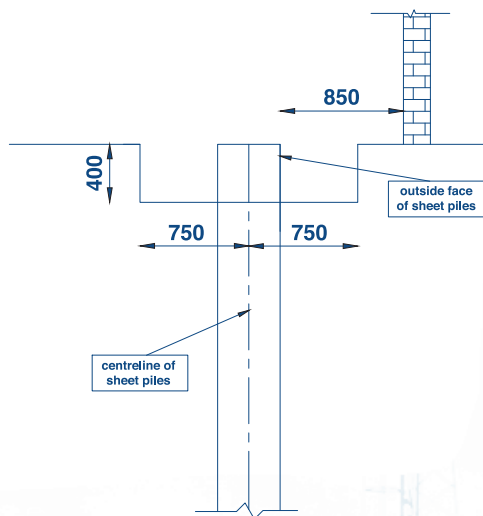
It may be required to pre-auger the ground first to enable pile installation,

The Fussey Piling rig shall be rigged ready for augering and augers assembled.

At the location of the pile clutches (centres) the auger is drilled down into the ground at 600mm centres using a 400mm diameter auger.



A leader trench will be required when driving to ground level or below.



## Pitching and Driving Piles

A Ground Release Shackle is used to lift individual piles into position. Piles are then interlocked into the adjacent pile. The high frequency vibrating hammer is then located over pile head and clamped onto pile.

The pile is then aligned and driven to close to finished level. This process can then be repeated with the next pile and so on in the same manner. Once the finished level has been checked and confirmed the piles can then be fully driven to finished level.

As with all vibratory leader rigs low levels of ground borne vibration and noise will occur during installation and extraction.



## Minimum attendances required;

- Piling Platform
- Setting Out
- Leader Trench
- Removal of obstructions
- Water
- Welfare