

See videos of our equipment working on our website www.fusseypiling.com

Kowan Stillworker Basic Method Statement

This has been produced by Fussey Piling to give a basic guide to installing sheet piles with a Kowan Stillworker silent and vibration-free piling rig. It is for information only.

Unloading and Mobilisation

The crane is delivered on a Low Loader. The rest of the equipment is delivered on an articulated lorry.

The piles and equipment are unloaded with the crane. Access ramps are to be a gradient not steeper than 1 in 10.

The crane shall work from a level, designed Working Platform – min 8m wide.

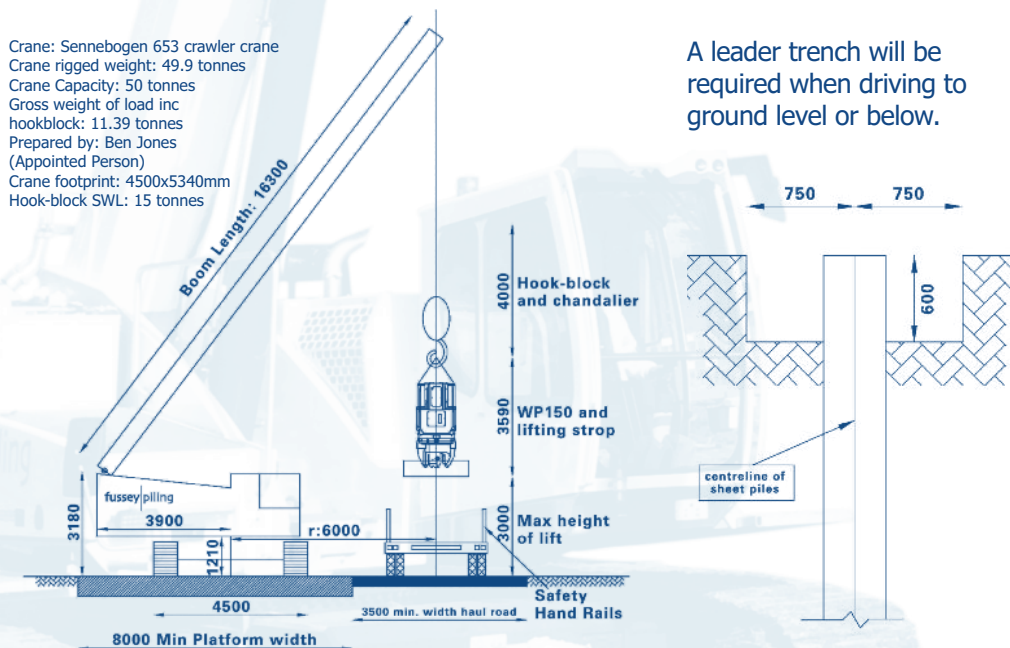
Setting Out

Setting out and levels are to be provided by the main contractor on the centreline of the sheet piles and at each change of direction and 10m intervals.



Crane: Sennebogen 653 crawler crane
 Crane rigged weight: 49.9 tonnes
 Crane Capacity: 50 tonnes
 Gross weight of load inc hookblock: 11.39 tonnes
 Prepared by: Ben Jones (Appointed Person)
 Crane footprint: 4500x5340mm
 Hook-block SWL: 15 tonnes

A leader trench will be required when driving to ground level or below.



Max Rectangular Bearing Pressure = 233kN/m²
 Equivalent Track Bearing Length = 2.77m
 Track width = 0.7m
 (Load case 1, Handling Stillworker at 8m radius)

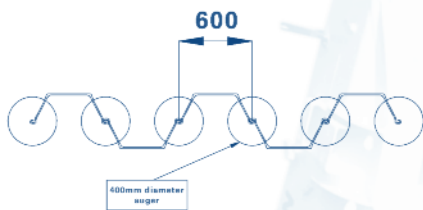
fussey|piling

Pre-Augering

It may be required to pre-auger the ground first to enable pile installation.

The Fussey Piling pre-auger rig shall be rigged ready for augering and augers assembled.

At the location of the pile clutches (centres) the auger is drilled down into the ground at 600mm centres using a 400mm diameter auger.



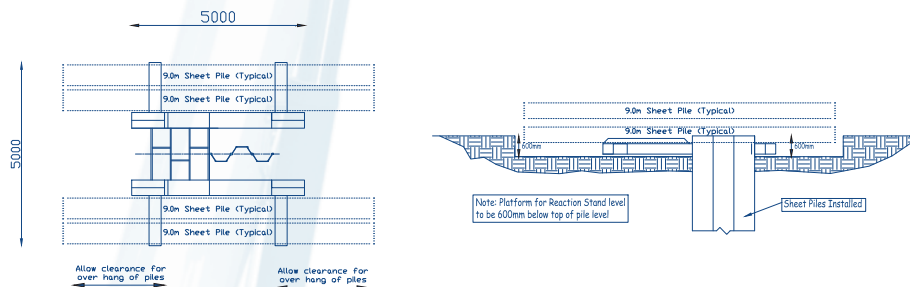
Pitching and Driving Piles

A Ground Release Shackle is used to lift individual piles into position. Piles are then interlocked into the adjacent pile.



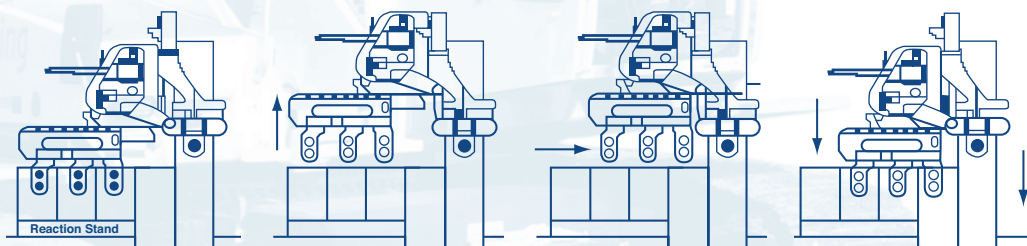
Reaction Stand

The Reaction Stand, is set up on the pile line or perpendicular to it. This stand requires a 5m x 5m level hard-standing 600mm below top of finished pile level, with room for piles to overhang.



Self Travel and Operation

- 1) The Still Worker is set on the reaction stand loaded with kentledge for the installation of the first two piles.
- 2) The Still Worker moves by elevating its travel carriage whilst supporting itself on the last installed pile.
- 3) The travel carriage then travels forward.
- 4) The travel carriage lowers itself and drops onto the installed piles and continues its hydraulic installation process.



Minimum attendances required;

- Piling Platform
- Removal of obstructions
- Setting Out
- Water
- Leader Trench
- Welfare

fussey|piling

Unit 2 Threshers Yard
West Street Kingham
Oxfordshire OX7 6YF

Tel 01608 659595

info@fusseypiling.com

www.fusseypiling.com